

Nordic Outdoor

Scan the code and learn more
about the Nordic Outdoor range.



From panel to finished facade

Four variants

A complete outdoor series of premium panels designed for beautiful facades. Crafted from heat-treated thermo wood, easy to install, and built to maintain its elegant look season after season.

Think Danish quality, **Think Nordic Outdoor**

Catalogue

| Table of Contents



04 Nordic Outdoor Panels
– Discover the Collection

06 FR Pro Panel
– A Fire-Rated Solution for Large Facade Projects

10 DIY Range
– Find Your Perfect Outdoor Panel

12 Product Guide
– Compare the Five Options Before You Choose

16 Notes
– For Reflections and Ideas About Your Facade Project



||

With Nordic Outdoor Panels, your facade gains an exclusive, modern expression. The natural wood grain brings warmth and elegance that lasts for decades, while the blend of design and durability makes it the perfect choice for both new builds and renovations.

About Us

Nordic Outdoor

Nordic Outdoor panels are designed for those who wish to combine aesthetics, design, quality, and durability in their outdoor spaces.

A facade with Nordic Outdoor Panels gives your building an exclusive and modern look. The panels' natural wood texture adds warmth and timeless beauty that lasts for decades. The combination of design and durability makes them a strong choice – both for new constructions and renovations.

The panels are also easy to use in a variety of settings: They are perfect for covered terraces, carports, and balconies where design and functionality go hand in hand. They're ideal for entrance areas that should welcome with style, and they work beautifully as durable facade solutions for both private homes and professional buildings.

And with five different solutions to choose from, you can find the perfect match for your facade project.

Nordic Outdoor Panels unite beauty and strength in a series made to last – in both form and function. With five unique panels, you can shape the look your architecture deserves – from natural warmth to bold character. Architecture with integrity.





Combining Nordic design, lasting durability, and smart functionality, Nordic Outdoor Panels are made for facades that remain beautiful year after year. With responsible, locally sourced materials and precision craftsmanship, every detail is designed to make installation simple – and the result exceptional.



Easy to set up. Hard to wear down.



Easy Installation

The panels are designed for quick and simple setup. Carefully engineered details ensure precision and a flawless finish – with no need for special tools. And with panels instead of loose slats, installation time is significantly reduced.



Long Durability

Build a facade that stands the test of time. The selected materials are resistant to weather and wear, giving you a strong investment in both aesthetics and functionality – a solution that stays sharp season after season.



Quality Wood

Made from high-quality, heat-treated Nordic wood. Thermo wood offers natural beauty, enhanced stability, and a facade that ages with character. A material that unites Nordic design tradition with exceptional durability.



| FR Pro Panel

With Nordic Outdoor FR Pro Panel, you get a robust and weather-resistant panel that combines Nordic design with documented fire safety – ideal for both professionals and private customers who want to build beautifully and safely for years to come.

FR Pro Panel is an aesthetic, fire-retardant choice for larger façade projects, offering added strength, high durability, and minimal maintenance.

FR Pro Panel is B-s2,d0 certified and complies with EU standards for façades up to 22 metres in height.

The combination of carefully selected materials and simple installation ensures a stable, aesthetic, and long-lasting façade – ideal for public, commercial, and residential construction where fire safety and material quality are key.

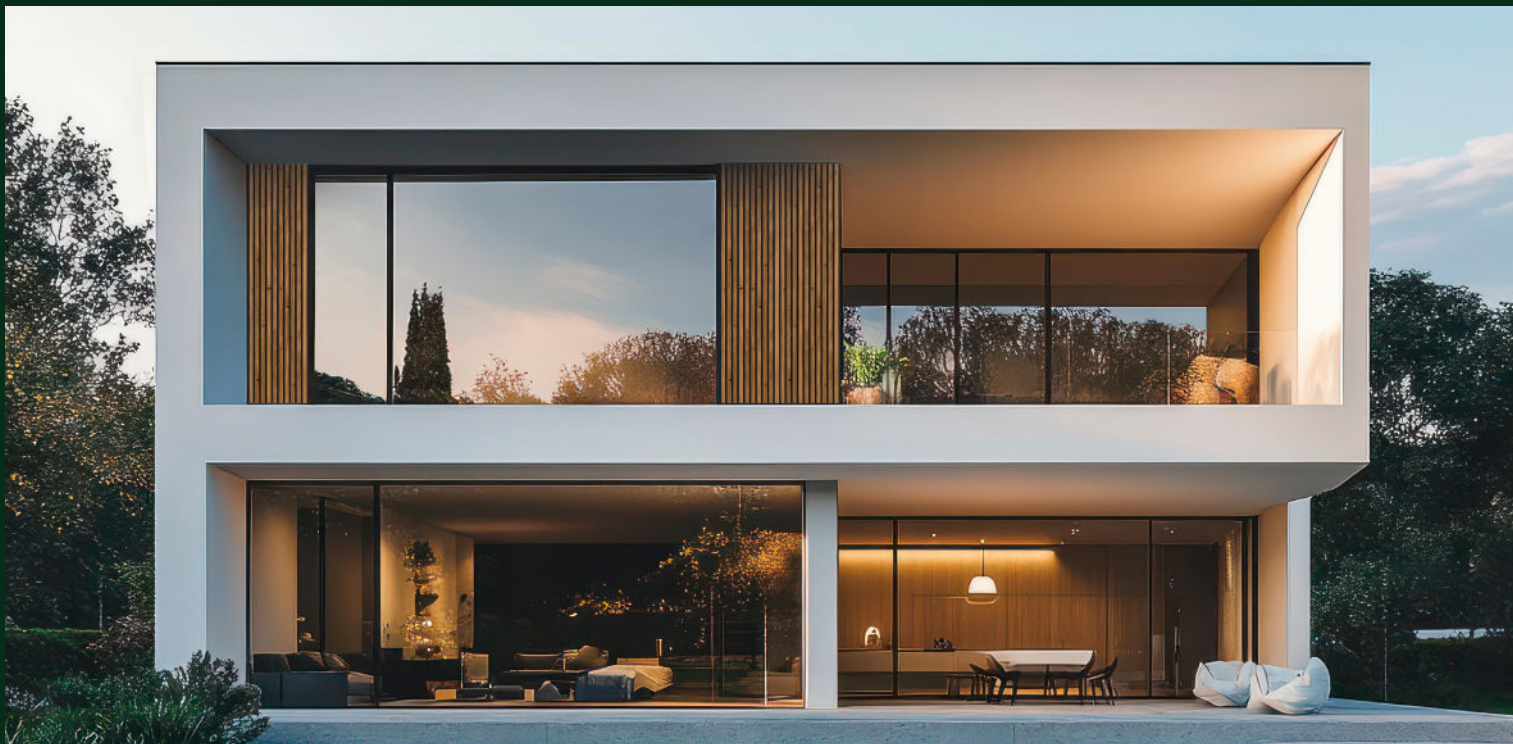


| Collection



FR Pro Panel

Nordic Outdoor FR PRO is a fire-safe, weather-resistant, and aesthetically refined facade solution, built from a high-performance stone wool core (B-s2,d0) combined with exclusive thermowood slats.





Let your facade speak of quality and craftsmanship.
Nordic Outdoor Panels bring together Nordic design,
natural warmth, and lasting strength – made for both
contemporary architecture and timeless renovations.





I DIY Range for Your Facade

In the Nordic Outdoor DIY Series, you'll find three different panel types – each suited for specific outdoor applications. While Flex is ideal for cladding facades or eaves, Design works perfectly in covered areas, and Pro excels as a complete and durable facade solution.

All panels in the series are made from high-quality, heat-treated Nordic thermo wood, which naturally evolves over time, developing a beautiful silver-grey patina. The panels require virtually no maintenance

while maintaining their natural texture and warmth.

The series gives you flexibility in design – every solution combines aesthetics and functionality, ensuring that both new builds and renovations achieve a durable and exclusive appearance.

Designed for simple and efficient installation, the DIY Series lets you quickly create a beautiful, long-lasting facade with a professional finish.

| Collection



Design Panel

The Nordic Outdoor Design Panel is the ideal solution for covered outdoor spaces – combining timeless aesthetics, practical functionality, and lasting durability.



Pro Panel

The Nordic Outdoor Pro Panel is a weather-resistant solution with a high-performance stone wool core and premium heat-treated thermowood slats – combining strength and natural beauty.



Flex Panel

The Nordic Outdoor Flex Panel features cross-mounted thermo wood slats, giving a light, open look where the background gently shows through.



| Product Features

| Product | Construction | Dimensions |
|---|--|--|
|  | FR Pro Panel Thermo wood slats on high-performance stone wool core | 2400 x 600 x 21 mm |
|  | Pro Panel Thermo wood slats on high-performance stone wool core | 2400 x 600 x 21 mm |
|  | Design Panel Thermo wood slats on moisture-resistant felt backing | 2400 x 600 x 24 mm |
|  | Flex Panel Thermo wood slats mounted on support profiles | 1200 x 600 x 36 mm 2400 x 600 x 36 mm |

| Application | Fire Resistance | Weather Resistance | Price Point |
|--|-----------------|--------------------|--------------|
| For facades up to 22 m with fire safety compliance | Yes (B-s2,d0) | ✓✓✓ | Professional |
| For facade applications across all building types | No | ✓✓✓ | Standard |
| Ideal for covered outdoor areas | No | ✓ | Economy |
| For renovating or upgrading existing facades | No | ✓✓ | Economy |

Notes

[illegible]

[illegible]

| Think Danish quality, **Think Nordic Outdoor**

FOG & VENØ A/S

Buntmagervej 5

DK-7490 Aulum

(+45) 8877 8370

CVR/VAT: 33 88 04 64